



Madeira

Verdant, sub-tropical paradise

Arranged by Travel Editions

Monte Palace Gardens

March 2026 – 6 days from *£1,345pp

The lush, volcanic Portuguese island of Madeira lies 400 miles off the coast of Africa and is 36 miles by 14 miles of outstanding natural beauty. Its warm, temperate climate makes it a verdant, sub-tropical paradise that is a delight to visit at any time of year. Much of Madeira has been designated a conservation area and it displays a wealth of superb flowers blooming effortlessly throughout the year. There are plenty of cultural sights too, particularly in the capital, Funchal, which has good museums, an impressive cathedral, farmer’s market and lots of excellent restaurants. A range of excursions will show you the highlights of the island, leaving some time for personal exploration or simply to relax at the hotel.



Porto da Cruz



Camara de Lobos

This holiday is operated by Travel Editions Group Travel

For further information please contact: Travel Editions Group Limited, 3 Young’s Buildings, London EC1V 9DB on Tel: 020 7251 0045

*Based on 30 passengers subject to availability





Cable car, Funchal to Monte

Itinerary

Day 1 Fly to Madeira and transfer to hotel.

Fly from Gatwick to Funchal with British Airways and transfer by coach to the five star Pestana Casino Park Hotel. Dinner and overnight at the hotel.

Day 2 Funchal and Monte.

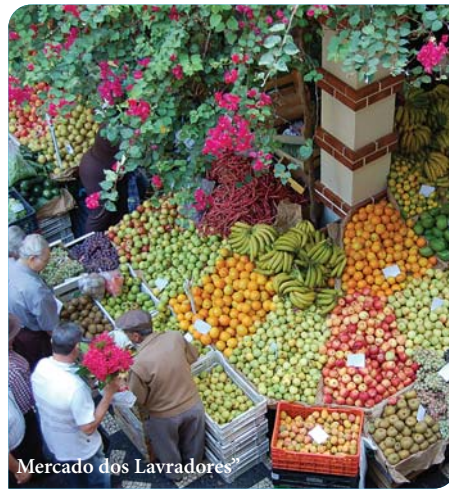
This morning we head into pretty Funchal for a guided walking tour and to visit the famous market hall “Mercado dos Lavradores”, where market vendors offer flowers, fruits and fish for sale, visit an embroidery workshop, for which the island is famous, and taste the famous Madeira wine with a tour and tasting at Blandys. Lunch is included before taking the 10-minute cable car ride up from Funchal to Monte, which offers splendid views over the harbour and bay and of the glorious gardens which surround the chateaulike Palace. (entrance included). Evening free.

Day 3 Catamaran Cruise and optional Levada walk and afternoon tea at Reid’s Hotel.

Staying on an island surrounded by thousands of miles of ocean, it makes sense to have a view of Madeira from a



Eira do Serrado



Mercado dos Lavradores

boat and this morning we do just that, taking a catamaran cruise along the coast with the chance to see some wonderful views of the island and perhaps some wildlife – maybe even a dolphin or two. The afternoon is free. You may choose to take the optional Levada walk or optional visit to the famous Reid’s Palace Hotel to explore its lush gardens and enjoy its renowned (and delicious) afternoon tea. Evening free.

Day 4 Eira DO , Serrado and East of the Island tour.

A full day spent exploring the east of the island taking in Eira do Serrado, Pico dos Barcelos and Valley of the Nuns. Lunch is included today with afternoon visit to Ribeiro Frio, Santana, Porto da Cruz e Ponta de São Lourenço. Evening free.

Day 5 West Madeira Island tour.

Today we embark on a tour which will show you some of the highlights of this picturesque island in the Atlantic. You’ll visit the picturesque village of Camara de Lobos, which was made famous by Sir Winston Churchill in 1950 when he painted the sea cliffs at Cabo Girao, the highest in Europe at 590 m. You then follow the coastline until we reach Ribeira Brava, to visit the village’s famous church. Then, along the Encumeada pass to Madeira’s most northerly point at Porto Moniz, long famous for its natural bathing pools and wonderful scenery, with free time for lunch. In the afternoon we return to Funchal via the high plateau of Paul da Serra and finally, Calheta. Farewell dinner with folklore show this evening.

Day 6 Return flight.

Morning at leisure. Transfer to the airport for the return flight to Gatwick.



Funchal

Where you stay

Pestana Casino Park Hotel, Funchal.

This modern, five-star hotel is set in 15,000 square metres of gardens and was designed by acclaimed architect Oscar Niemeyer. It is located five minutes on foot from the city centre next to the cruise port and offers a very high standard of comfort and services. Facilities here include Panoramico” restaurant, infinity swimming pool, spa, casino and very comfortable bedrooms with all modern amenities.

Included in the price

- Return scheduled flights with British Airways from Gatwick to Funchal
- Five nights’ accommodation on bed and buffet breakfast basis at the five-star Casino Park Hotel, based on shared occupancy of a twin/double room
- Return transfers from Funchal airport to the hotel
- Full range of coach and walking excursions as detailed with services of a local guide on excursions and transfers
- Welcome dinner
- Farewell dinner with folklore show
- Madeira wine tasting
- Lunches on days 2, 4 and 5
- Local tourist tax
- **Not included**
- Holiday insurance
- Double for sole use supplement
- Meals and drinks not specified
- Portorage and Gratuities not mentioned
- Optional excursions - Reids afternoon tea or Levada walk

